

Copper Anti-Static Tinsel is a traditional and effective method of neutralising static electricity.

It is commonly used to neutralise sheets and webs throughout industry.

---

#### PERFORMANCE

- The fine copper 'leaves' of tinsel concentrate the electric field and allow the static charge to flow to earth.
  - It is an effective solution to many static problems where electrical static eliminators cannot be justified.
  - It is suitable for high charges and fast speeds.
- 

#### ESSENTIAL QUALITIES

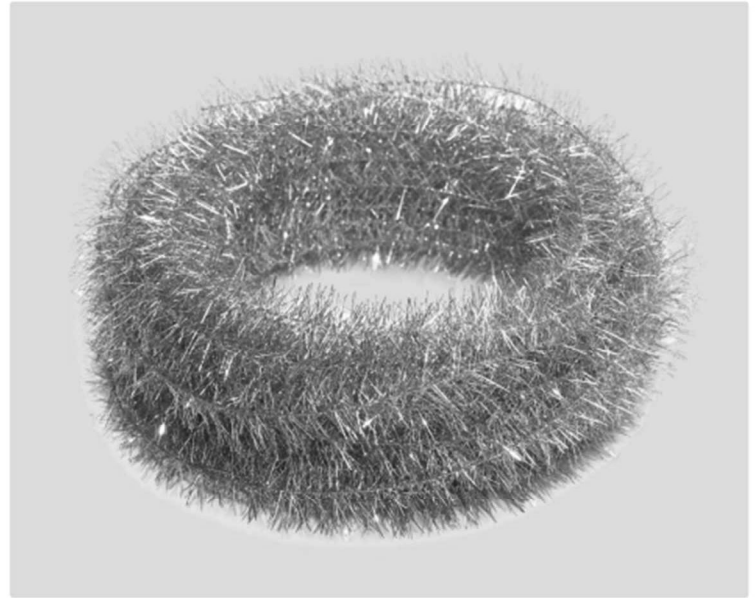
- 801 Tinsel is 99 % pure copper.
  - Available in boxed lengths of 22 m or 110 m.
  - Dimensions: diameter approximately 32 mm, with multiple copper wire core to give positive grounding and strength.
  - Breaking strain is approximately 10 kg.
- 

#### CONNECTIVITY AND CONTROL

- 801 Tinsel must be connected to earth.
- 

#### APPLICATIONS

- A wide variety of web and sheet applications.



#### HOW IT WORKS

When positioned a few millimetres above the material, the fine copper filaments concentrate the electric field of the static charge until the air ionises. Ionised air is conductive and allows the ion exchange which neutralises the charge.

When the tinsel touches the material there is conduction of the charge to earth in addition to the ionisation. This increases the performance and is recommended wherever it is permitted for the tinsel to touch the material.

